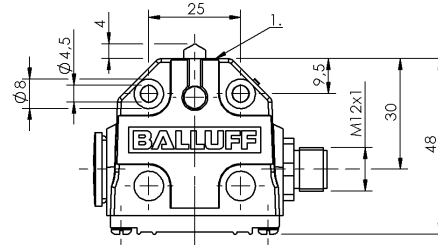
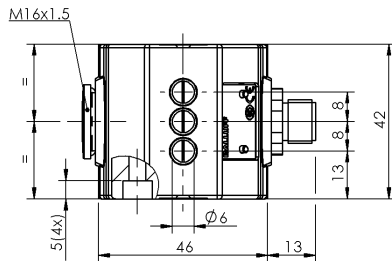


Mechanical Cam Switches
BNS 819-B03-D08-40-13-S80R
 Order Code: BNS01RZ

BALLUFF



1) Reference edge



Basic features

Approval/Conformity	CE UKCA CCC WEEE
Basic standard	IEC 60947-5-1
Operating principle	1-3. Switch position: Mechanical
Version	Snap contact

Display/Operation

Function indicator	1-3. Switch position: None
---------------------------	----------------------------

Electrical connection

Connection	M12x1-Flange male, 5-pin
Connection type	1. Switch position: Connector

Electrical data

Continuous current	1-3. Switch position: 0.1 A
Rated operating voltage Ue	1-3. Switch position: 250 V AC
Switching function mechanical	Single-pin changeover
Switching rate	1-3. Switch position: 200/min

Environmental conditions

Ambient temperature	-5...85 °C
IP rating	IP67

Functional safety

B10d (EN ISO 13849-1)	BSE 74.1: 10 mil. switching cycles
------------------------------	------------------------------------

Material

Housing material	Aluminium, Anodized
Housing material, surface protection	Anodized
Material contacts	1-3. Switch position: Gold
Plunger material	1-3. Switch position: 1.4034 stainless steel

Mechanical data

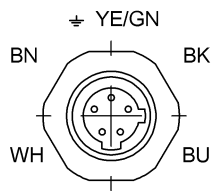
Approach direction	longitudinal, parallel to attachment surface
Approach speed	1-3. Switch position: 20 m/min
Dimension	40 x 42 x 48 mm
Distance cam - reference edge	1-3. Switch position: 2.30...2.80 mm
Flange, feed-through	None
Installation	Vertical
Life expectancy mechanical	1-3. Switch position: 10 mil. switching operations
Number of switching positions	3x Chisel Mechanical
Plunger spacing 1st switch position	13 mm
Plunger style	1-3rd switch position: Chisel
Switch actuation force	1-3. Switch position: 8 N
Switching element	1-3. Switch position: BSE 74.1

Range/Distance

Reproducibility
 Switch position spacing

1-3. Switch position: ± 0.02 mm
 8 mm

Connector Drawings



View of connector side

Wiring Diagrams

